

Reliable Power Starts At

1, 2, TREE™

With **DTE**

Tree Work Scheduled

DATE:

DTE Customer,

Trees are the leading cause of power outages and can create dangerous safety hazards across the energy grid. To ensure the safety of you and your family, we've identified a tree that needs to be trimmed or removed. This will better allow us to deliver safe, reliable energy to you and your neighbors.

Here's more info:

FREE of Charge!

- Tree Trimming – You may see some of our crews in the near future. No further action is required on your part. More info is included on the back of this door card.
- Tree Removal – Trees recommended for removal are marked with two white dots near their bases. We would like to discuss this work with you before we begin. Please read and complete the “Tree Removal Agreement” provided.

Other:

Our tree-trimming program is aligned with industry best practices and our team is committed to striking the delicate balance between safe, affordable and reliable energy. There is no charge for this service.

Questions or concerns? We're here to help. Contact your DTE representative as soon as possible to ensure we're able to speak with you before work begins:

DTE Representative:

Phone #:

DTE

Recently trimmed areas have seen electric reliability improve by an average of 70 percent.

What To Expect

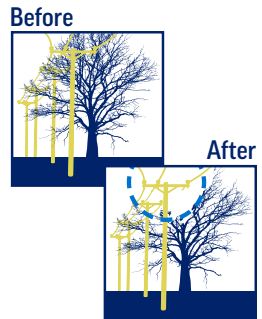
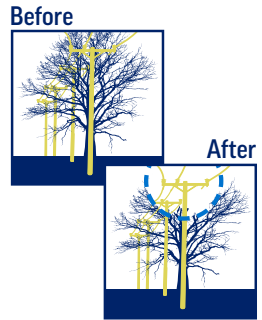
How We Trim

Crews will trim a radius of approximately 15 feet around DTE electrical equipment.

Debris Policy

- Debris we'll remove: small branches and limbs.
- Debris we'll leave behind: larger pieces of wood (cut to firewood length); dead or diseased wood or debris; trees and/or limbs that fell due to natural causes.

Please Note: We do not remove dead or diseased vegetation.



Service Drops

Your Service Drop

The power line that runs from the electric pole near your property to your house is your personal connection to the energy grid. Keeping vegetation away from your service drop to prevent outages and safety hazards is your responsibility.

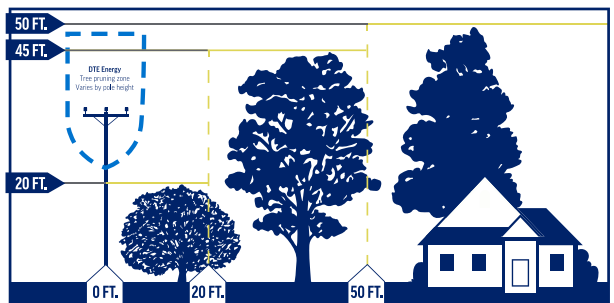
Since service drops are energized and extremely dangerous, we highly recommend you use a professional tree-trimming service to remove or maintain any overgrown trees that are in contact - or may come into contact - with it.

Safety

Trees and the energy grid don't mix and, when combined, can create potentially dangerous safety hazards. To keep your family safe, do not trim, work near or climb on trees near power lines, or on trees with power lines nearby.

Right Tree, Right Place

The secret to having strong, beautiful trees and reliable electric service is planting the right trees in the right places. Consult the planting guide at dteenergy.com/treecare for more information.



Learn more at dteenergy.com/treecare