

DTE

WORK AGREEMENT

COVID-19 UPDATE: At DTE Energy, the safety of our employees and customers remains our top priority. That's why we're working closely with medical experts to implement procedures that will keep our team members, and you, safe as we continue critical work to make sure you have the power you need.

Date:

We noticed you have vegetation on or near your property that could cause a public safety hazard and impact your electric service. To improve our ability to deliver safe, reliable energy to you and your neighbors, our experts recommend treating this vegetation with herbicides.

Here's what you can expect:

- The contractor listed below will treat selected vegetation.
- Keep pets and people away from the area until the treatment dries, which is typically within minutes.
- Please visit dteenergy.com/treecare or call the contractor below if you have any questions or if you'd like additional information.

Applications will be applied by:

CONTRACTOR CONTACT INFO
GOES HERE

Homeowner signature:

Date:

See reverse for additional information.

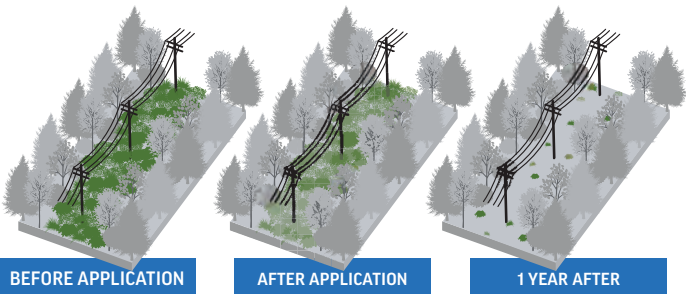
Who does the work

DTE contracts this work to companies that specialize in herbicide application. All treatments are applied by licensed professionals who are trained to apply treatments safely and effectively. If you have questions regarding the work planned for your property, or questions following application, please contact the company specified on the other side of this door hanger.

After treatment

Days or weeks after application, treated vegetation may start to brown as it enters its decomposition stage. The herbicides used target specific species, so other plants may remain green.

In many instances, low-growing vegetation will begin to flourish in the treated area, creating a healthy, balanced environment that won't interfere with your power or increase the likelihood of a safety hazard.



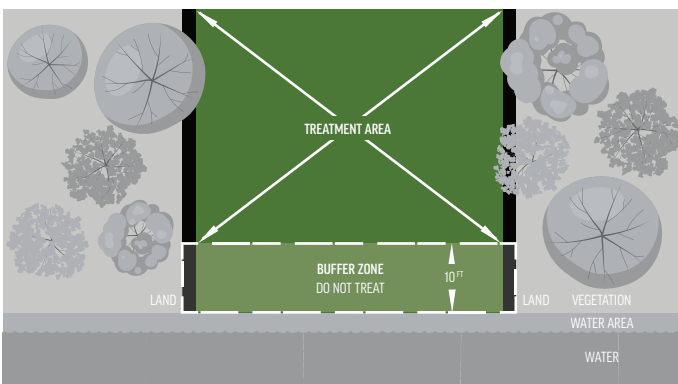
What's in the mix

All herbicide mixtures used in DTE's program are approved by the Environmental Protection Agency (EPA), and the Michigan Department of Agriculture and Rural Development (MDARD), and are of similar strength to other lawn care and cleaning products you may already have in your home.

The herbicides used in our program are listed on the front of this door hanger.

Where we don't spray

We steer clear of sensitive areas you might not want treated. We maintain a buffer zone of at least 10 feet around public parks and large bodies of water, among others. If you have an area you'd like us to avoid, call the contractor listed on this door hanger.



DTE disclaims any and all liability for representations, expressed or implied, contained within this document. DTE does not guarantee that the herbicides will have their intended effect, nor does DTE make any warranties as to the impact on future power outages or safety hazards. By agreeing to allow professionals contracted by DTE to spray vegetation with herbicide, customer waives any claims for damages or loss. DTE makes no representations or warranties of any kind and, to the full extent permissible by applicable law, DTE disclaims all express or implied warranties. DTE shall not be liable for damages of any kind arising from the spraying of vegetation including, but not limited to direct, indirect, incidental, punitive and/or consequential damages.